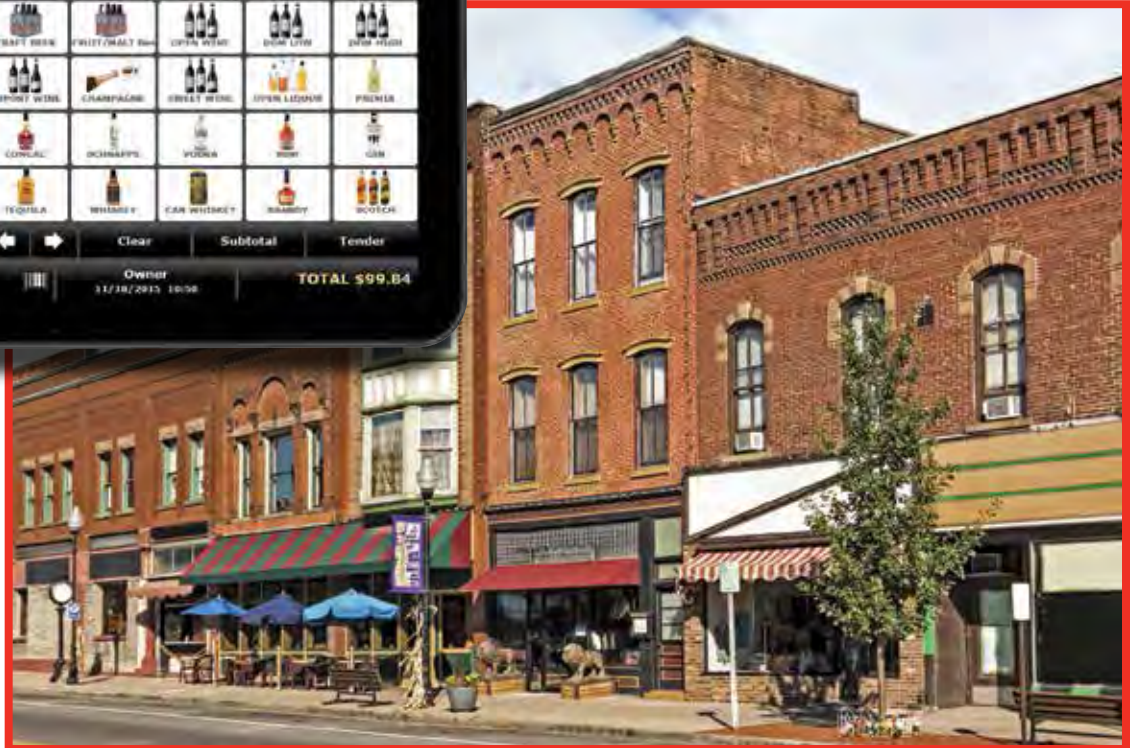


Tabby

Basic Retail POS mobile, unique, innovative, affordable



Tabby Retail

Tabby provides a contemporary platform that is easy to use and maintain, but without the budget strains and complexity of a full-scale POS system. With minimal assistance, merchants can setup their own store database; establish items, prices, departments, groups and other options. Operation is intuitive; tablet-savvy operators are productive after just minutes of instruction.

What is Tabby?

Tabby is a WEB Server available in two different configurations. **Tabby Embedded** is ideal for many small installations and conveniently provides

the Tabby device embedded in a SAM4s Ellix 40 thermal receipt printer; **Tabby SL** is a compact standalone device that allows you to install the printer or printers of your choice in your Tabby network.

To enable wireless mobility, simply connect Tabby to a wireless router. Tabby runs on any browser capable device regardless of operating system, including PCs, mobile devices or tablets. Use Tabby to register sales, print receipts, and record payments. Tabby Backoffice provides store management tools, database maintenance, stock entry and management reports.

Tabby Advantages

- Tabby does not rely on tablet or device resources.
- No application to install – adding or replacing a tablet or mobile device can be done “out of the box”. Simply open your browser and enter Tabby’s IP address.
- Remote management is inherently ready.
- No Internet is required, but an internet connection may be desired for emailed reports or remote access.

Tabby

Tabby Retail Perfect for Any Small Business



Small retail liquor, beer, wine and gift.



Fair stands, carnivals and mobile concessions.



Landscape, garden and retail where mobility is essential.



Tabby Configuration



Tabby SL

Flexible, compact, stand-alone.



Tabby Embedded

The Tabby device is embedded in a high-speed SAM4s Ellix 40 thermal receipt printer.



Wireless Router

Use a wireless router (optional) to communicate with Wi-Fi enabled tablets.

Select Your Preferred Device

Whatever your device preference, Tabby is ready. Many find that a 10" tablet such as the iPad provides the best combination of screen size, mobility and familiarity. Others may prefer a fixed terminal – which may be more cost effective than an iPad and a stand. You choose; you can access Tabby using any device, running any operating system that supports a browser.

Connectivity

- Connects to up to 8 point of sale devices.
- Tabby's serial ports support up to 4 devices.
- Supports up to 4 printers.
- Each printer can drive up to two cash drawers.

Select Your POS Peripherals

Peripherals supported include:



Deploy up to four transaction or kitchen printers.

Display orders on kitchen video systems.

Retail Business

Tabby Features

Receipt Printer

Print receipts on the embedded Ellix 40 (Tabby Embedded) or on the printer of your choice (Tabby SL).



Stock Management

The stock screen provides an easy way to enter stock for items or make adjustments to existing stock after each new delivery or physical inventory.



Store and Recall

Tabby gives you the flexibility to enter an order and defer payment to a later time. Easy to use for call in orders or if an inside customer is running a tab.

Scanning

Tabby supports serial scanners connected to a Tabby port or wireless Bluetooth scanners paired with your Bluetooth enabled device. Use the scanner to check out, or to add items or stock in Tabby Backoffice.

Electronic Payment Security

Tabby uses the PA-DSS validated Datacap DataTran™ devices to process integrated electronic payments. Credit, debit, gift and EBT payments can be accepted.

Client Tracking

You can select a specific customer at the time of sale so that you can track sales levels. You can view either revenue or entire receipts.



Deploy up to eight POS devices.



the E-Pos terminal.



Connect up to eight cash drawers.



Connect up to two pole displays.



Add a scanner at each POS device.

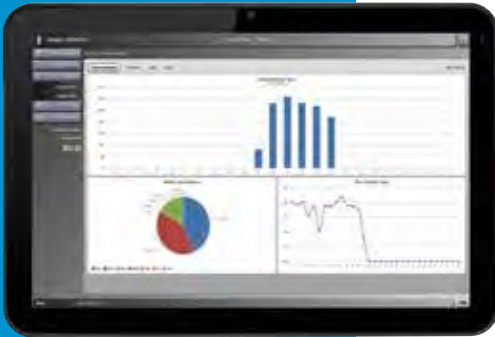


Datacap payment device.



Verifone VX 805 PIN pad.

Tabby



Reports

Significantly, Tabby doesn't just maintain monthly or yearly reports, like other systems. Instead Tabby archives each daily report in its database. So if you are planning staff for the upcoming holiday weekend, you can go back and look at sales on the same day for previous years. With all reports in the report database, you can select how you want to review sales by day, by week, month, quarter, year or for any range of days you select.

Data Stored Locally – Not in the Cloud – Accessible Remotely

- Daily X & Z Reports
- Sales Statistics Reports
- Payments Reports
- Payment Statistic Reports
- Group Reports
- Operator Reports
- Item Reports
- Inventory Reports
- Department Reports
- Journal Management – Search, Review, or Reprint Receipts from the Electronic Journal
- Sales Overview Dashboard
- Detailed Sales Charts and Graphs

Features

SAM4s Ellix 40 Thermal Receipt Printer

A SAM4s Ellix 40 thermal receipt printer is included in a Tabby Embedded device and optionally available for Tabby SL or for additional printers in a Tabby Embedded system.

- Fast 270mm/Second Print Speed
- Drop and Print Paper Loading
- LCD Screen
- Anti-Jam Technology
- Energy Star Certified

Tabby Capacities and Features

- 10,000 Items
- 100 Groups
- 80 Tenders
- 40 Discounts
- 8 Operators
- 1,000 Client Accounts
- 50 Tables
- Gift Receipt
- Token Receipt
- Inventory Level Reporting and Stock Shortage Warning
- Prints Receipt Messages and Logos
- Four Price Lists/Levels Available for Each Item
- Log In Security for Tabby Operators and Backoffice
- Flexible, Easy-to-Configure Display Layout
- Remote Management
- Email Reports



All product and company names are trademarks, service marks or registered trademarks of their respective owners. All product features are subject to change without notice.